

水橋

WATER
BRIDGE

Visit!
Mizuhashi



しらいわがわ
白岩川
Shiraiwa River

大辻山に源を発する二級河川。毎年5月に行われる水橋まつりの舞台であり、水橋高校や富山北部高校のカヌー部の練習風景も見ることができる。

The source of Shiraiwa River is located at Mt.Ootsuji. It is a place where Mizubashi Bridge Festival is held every May. You might encounter students from high school canoe team practicing there.



じょうがんじがわ
常願寺川
Jyoganji River

立山連峰北ノ岳が源の真川と浄土山が源の湯川が合流し富山湾に注ぐ世界屈指の急流河川。昔から流域に水害をもたらして来た暴れ川。

Magawa River originating in Tateyama renpou Kitanomataake, and Yugawa River, which originate in Mt. Joudo, merge to form Joganji River and flow into Toyama bay. It is one of the most rapid rivers in the world that has caused many flood damages since old days.





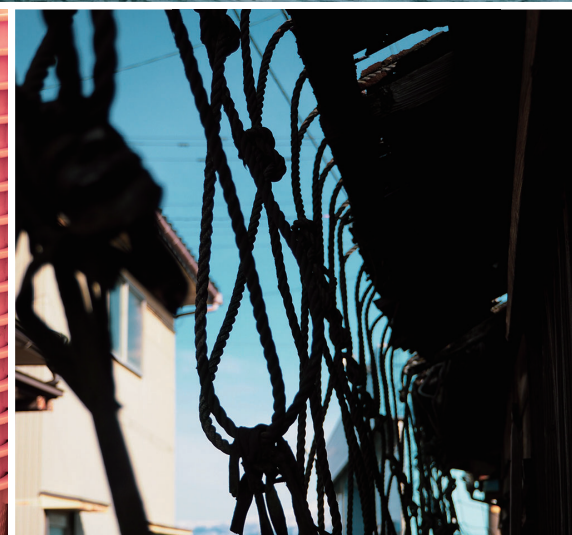
みずはしぎょみんごうどうくみあい

水橋漁民合同組合

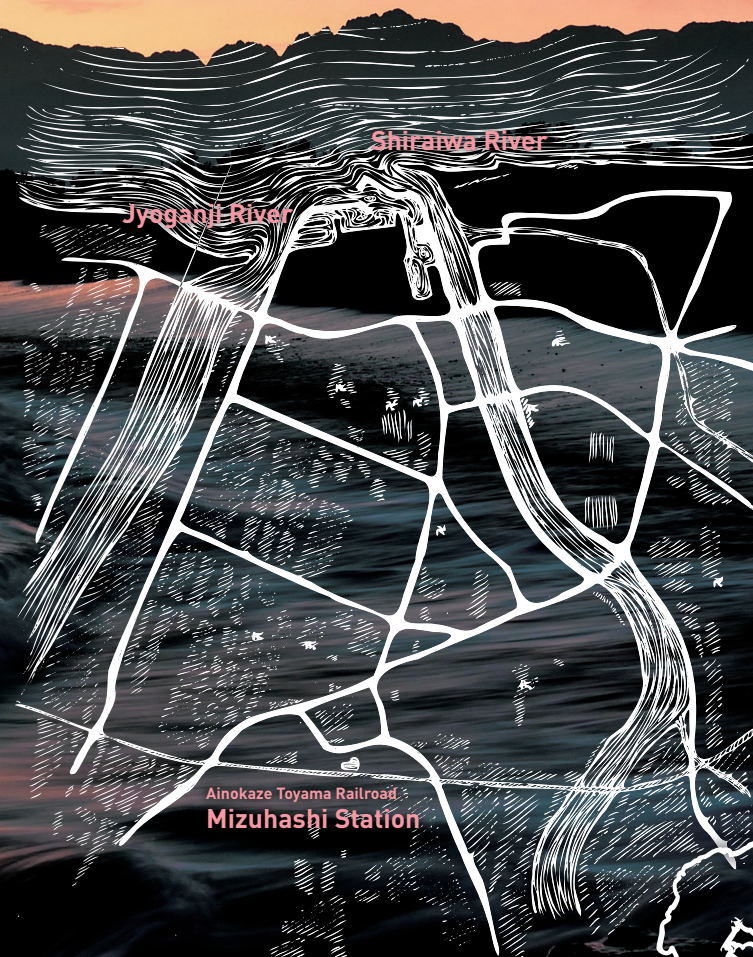
Mizuhashi fishery cooperative

水橋漁港に所属する若手漁師の有志連合体。漁業に対する理解を深め、将来の人材育成や漁業の発展を目指すための取り組みも行う。

Mizuhashi Fishery Cooperative is a voluntary association which is made up of younger fisherman belonging to Mizuhashi Fishing Port. They strive to deepen the understanding of fishery business, cultivate human resources, and further develop fishery business.



Visit! Mizuhashi



越中富山 水橋



ホタルイカ
Hotaru ika (firefly squid)

水深200 ~ 600mに生息し、春になると岸近くまで集まって来る。発光する様や謎の多い生態から、富山湾の神秘とも称される。

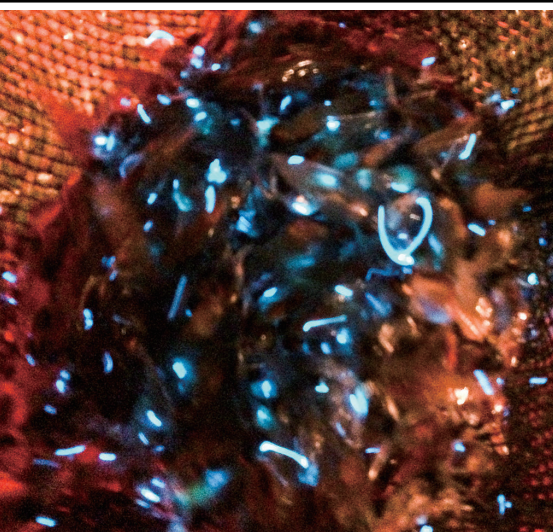
Hotaru ika (firefly squid) live in 200-600m deep under the sea and they swim close to the shore in spring. They are called "Mystery of Toyama bay" having a lot of characteristics that remain unknown, one in particular is how they glow in the dark.



みずじんじゃ
水神社
Mizujinja

水橋川(現白岩川)に架かる立山橋に村々の神社境内の神木も使われた。神慮を慰め、川の安泰を念じるため、水橋水神社が建立された。

A part of Tateyama bridge, that crosses Mizuhashi River (current Shiraiwa River), was built with sacred trees from a nearby shrine. Since sacred trees were used as bridge material, people were afraid of god's punishment. In order to alleviate the god's will as well as wishing for peace in the river, Mizujinja was built.





みずはしはしまつり
水橋橋まつり
Mizubashi Bridge Festival

明治時代、水神社建立時の祭礼が起源。数十の舟からの笛、太鼓の音とともに流し火を行い、火の神が海に注がれる。花火大会も人気。

The festival originates back in Meiji era when Mizujinja was built. People send off lanterns on the river along with the music of Japanese flute and drums to send off God of fire. The firework festival is also popular.



水橋フィッシャリーナ Mizuhashi fisharena

マリンスポーツや釣りを楽しむための海洋性レクリエーション施設。ボートや遊漁船150隻を保管できる。

Mizuhashi Fisharena is a recreation facility for marine sports and fishing. It can accommodate up to 150 boats and fishing boats.

富山市水橋辻ヶ堂2679番地28地先
TEL.076-482-3939

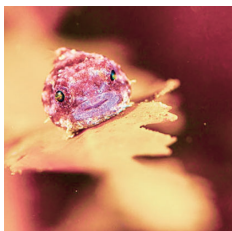


富山湾岸サイクリング Rental Bike

海岸沿いに整備されたサイクリングロードを走り、水橋漁港までおよそ7kmの道のり。料金は一台レンタルにつき1日100円。

You can ride a bicycle on the trail along the shore. It is approximately 7km (4.3 miles) to Mizuhashi fishing port. Rental fee is ¥100 per bike per day.

岩瀬カナル会館
富山市岩瀬天神町48番地
TEL. 076-438-8446

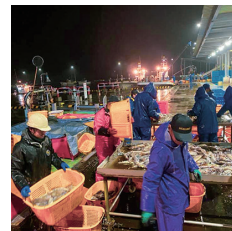


富山湾ダイビング Scuba diving in Toyama bay

24時間ダイビングが可能。時間帯によって様々なダイビングが楽しめる。初心者にはシュノーケリングもおすすめ。

You can dive 24 hours a day. They offer various types of diving depending on the time of the day. Snorkel is recommended for beginners.

ダイビングショップ海遊
富山市豊田町2-9-24
TEL. 076-442-2285



漁港見学 Fishing port observation tour

早朝、運が良ければ漁から戻った船からの魚の水揚げ、選別の様子を見ることが出来る。

Fishing vessels come back to the port early in the morning. You might be able to observe them unloading and sorting out the fish they caught.

水橋漁民合同組合
富山水橋辻ヶ堂36
TEL. 076-478-0133

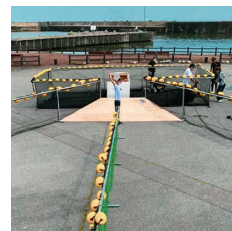


地引き網体験 Experience Beach Seine

漁師と一緒に網を引いたり、魚をつかみ獲り。大人から子どもまで楽しむことができる。4月～10月。要予約制。

Beach Seine is a method of fishing in which fish nets are shot in to the ocean near the shore by hand or from a small boat in a circular shape, then pulled to the shoreline by hand from both ends to trap the fish. You can experience dragging the net with fishermen as well as catching fish by hand. It is a experience that both kids and adult can enjoy. Season: April-October, reservation only.

水橋漁民合同組合
富山水橋辻ヶ堂36
TEL. 076-478-0133



ミニチュア定置網体験 Experience miniature fixed net fishing

定置網漁の様子をミニチュアサイズの模型を使い陸上で再現するプログラム。要予約制。

You will use a small size fixed net on land to simulate the fixed net fishing. Reservation only.

水橋漁民合同組合
富山水橋辻ヶ堂36
TEL. 076-478-0133





かまぼこ作り体験

Experience Kamaboko (fish cake) decoration

鯛のかまぼこをカラフルに彩る「飾り・細工かまぼこ作り」。世界に一つだけのオリジナルかまぼこ作りを体験できる。

You can decorate sea bream kamaboko (steamed fish cake) with colored fish paste. The concept is similar to icing on a cookie. You can experience creating your own original kamaboko.

梅かまU-mei館

富山市水橋肘崎(カйнаサキ)482-8
TEL. 0120-108-063



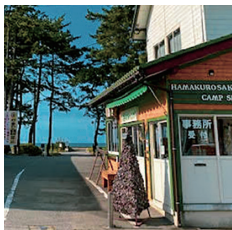
料理旅館 久乃家

Japanese style hotel & restaurant Hisanoya

昭和二十年創業の富山料理が味わえる旅館。旅人や釣り人の癒しの場として浴場・食事・宿泊と多くの人に親しまれている。

Hisanoya is a hotel & restaurant established in 1945 where you can enjoy Toyama cuisine. It provides public bathing area, food, and accommodation and serves as healing place for tourists and fishermen.

富山市水橋山王町 1605
TEL. 076-478-0249



浜黒崎キャンプ場

Hamakurosaki camping ground

キャンプ場の目の前には砂浜が広がる。ログハウス、コテージ、BBQ用品の貸し出しあり。サイクリングの立ち寄り先としても。

The camp ground is located right in front of the beach. You can rent log house, cottage, and BBQ equipment. It is a good place to stop by when you are on a cycling trip.

富山市浜黒崎3385-1
TEL. 076-438-5767



世界一かわいい美術館

The world's cutest museum of art

横山大観や上村松園等の日本画を中心とした所蔵作品を展示する私設美術館。古民家のケヤキ材を使った現代的な佇まい。

Japanese style paintings by famous artist such as Taikan Yokoyama and Syouen Uemura are displayed. The modern building is made of keyaki (zelkova tree) and reminds you of an old style Japanese house and it is also equipped with a rest area.

富山市水橋伊勢屋257
TEL. 076-411-9817



森昆布専門店

Mori Konbujiime Speciality Store

富山の郷土料理を美しく、さらにおいしい料理に磨き上げようと、元板前が始めた昆布締め専門店。

Konbujiime is raw seafood marinated with konbu (kelp). A former chef opened this store in order to boost appearance and flavor of Toyama cuisine.

富山市水橋辻ヶ堂2162-9
TEL. 076-478-2153



あいの風とやま鉄道水橋駅

Ainokaze Toyama Railroad Mizuhashi Station

水橋漁港から徒歩20分の距離にある。米騒動の舞台でもあり、当時の駅舎が今も使われている。

Mizuhashi station is a 20 minutes walk from Mizuhashi fishing port. It was a place where Rice Riot of 1918 started. The station building is still being used from the old days.

富山市水橋伊勢屋676-2
TEL. 076-444-1300(本社)





発行：とやま遊水会地域協議会
協力：水橋地域住民ほか有志の皆さん

076-478-0133
<http://mizuhashi-gyomin.jp/>